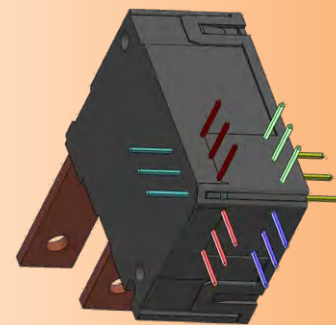


"Technology Leadership"

- Industry-leading contact performance
- Shortest contact bounce
- Most compact with multi pin-out options
- Unique bi-stable rocker actuation

"The Safe Choice"

- Best lifetime performance
- UC3 compliant (EN 62055-31)
- Highest magnetic tamper resistance
- Industry-leading MTBF



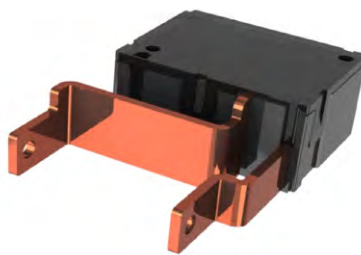
Multi pin-out options

Disconnect Relay for Smart Meters **LEDEX-EM**



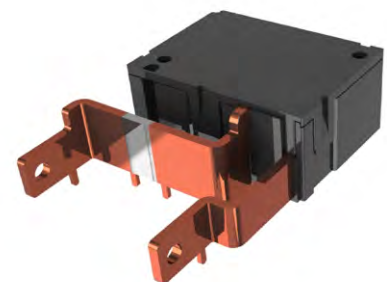
EMR

- Straight terminals
- Multiple control pins



EMC

- Custom terminals
- Multiple control pins



EMS

- Custom terminals with shunt
- Multiple control pins

For more information, contact us at sales@johnsonelectric.com
www.johnsonelectric.com