

**Characteristics:**

High Detent Torque EC Motor

**Specifications:**

Shaft Diameter	: Ø 0.125 in
Input Voltage	: 12.0 V DC
Detent Torque	: 0.04 lb.in
Output Power at Maximum Efficiency	: 0.00 hp
Maximum Efficiency	: 56%
Torque at Maximum Efficiency	: 0.12 lb.in
Speed at Maximum Efficiency	: 1795 rpm
Life (Typical)	: 20000 hr
Weight	: 3 oz
Electrcial Connection	: 2.00mm pitch receptacle, 8 Circuits

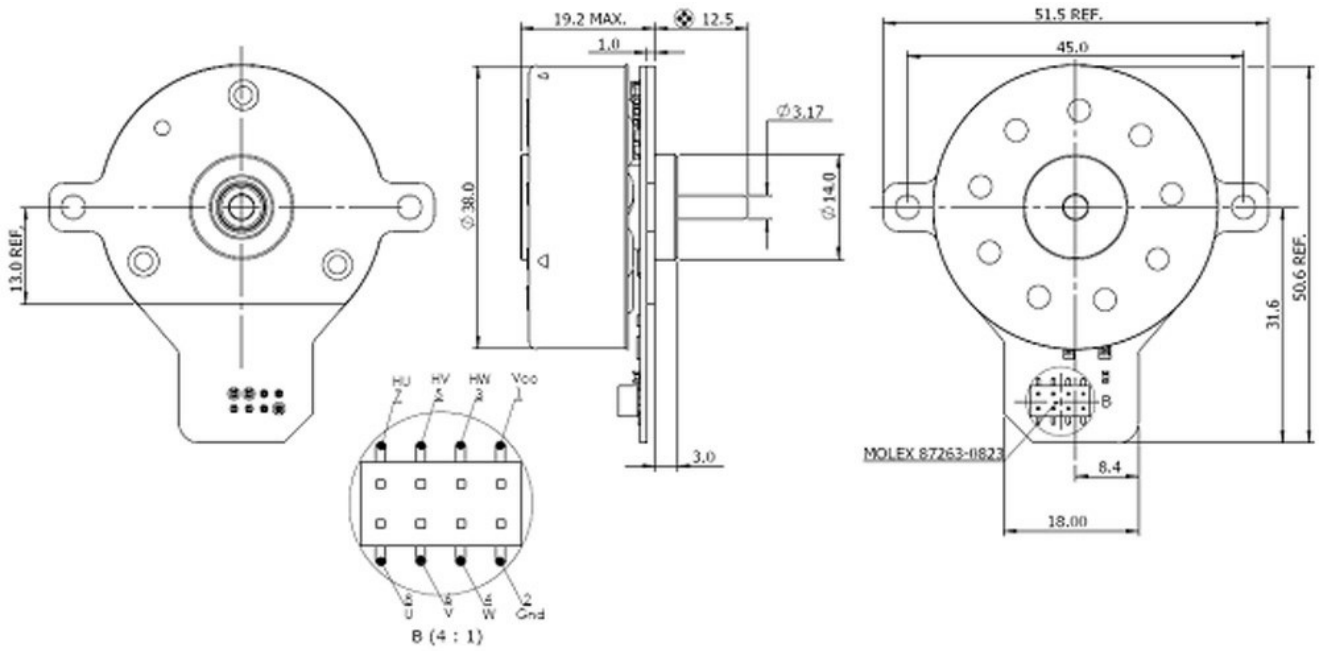
**Performance Data:**

	No Load	Stall	Maximum Efficiency	Maximum Power
Current (A)	0.10	1.50	0.37	0.80
Efficiency (%)	-	-	56	42
Output Power (hp)	-	-	0.00	0.01
Speed (rpm)	2300	-	1795	1120
Torque (Lb.in)	-	0.60	0.12	0.30

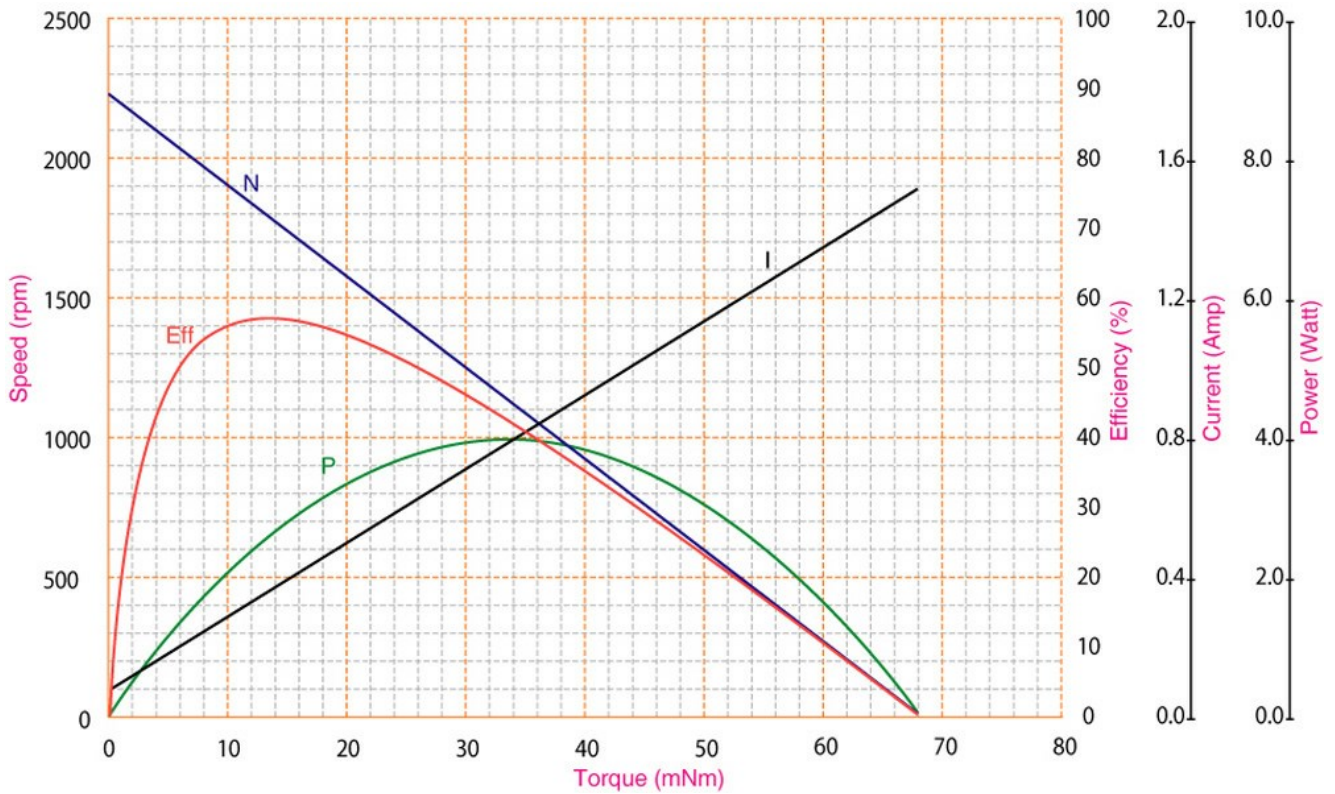
**Application Examples:**

Blowers, Air Flap Actuators, Water Valve Actuators, HVAC, Ventilation, Safety Dampers

Outline Drawing:



Performance Curves:



Units in Metric