

Characteristics:

High Detent Torque EC Motor

Specifications:

Shaft Diameter	: Ø 3.175 mm
Input Voltage	: 12.0 V DC
Detent Torque	: 5.00 mNm
Output Power at Maximum Efficiency	: 2.54 W
Maximum Efficiency	: 56%
Torque at Maximum Efficiency	: 13.49 mNm
Speed at Maximum Efficiency	: 1795 rpm
Life (Typical)	: 20000 hr
Weight	: 80 g
Electrcial Connection	: 2.00mm pitch receptacle, 8 Circuits

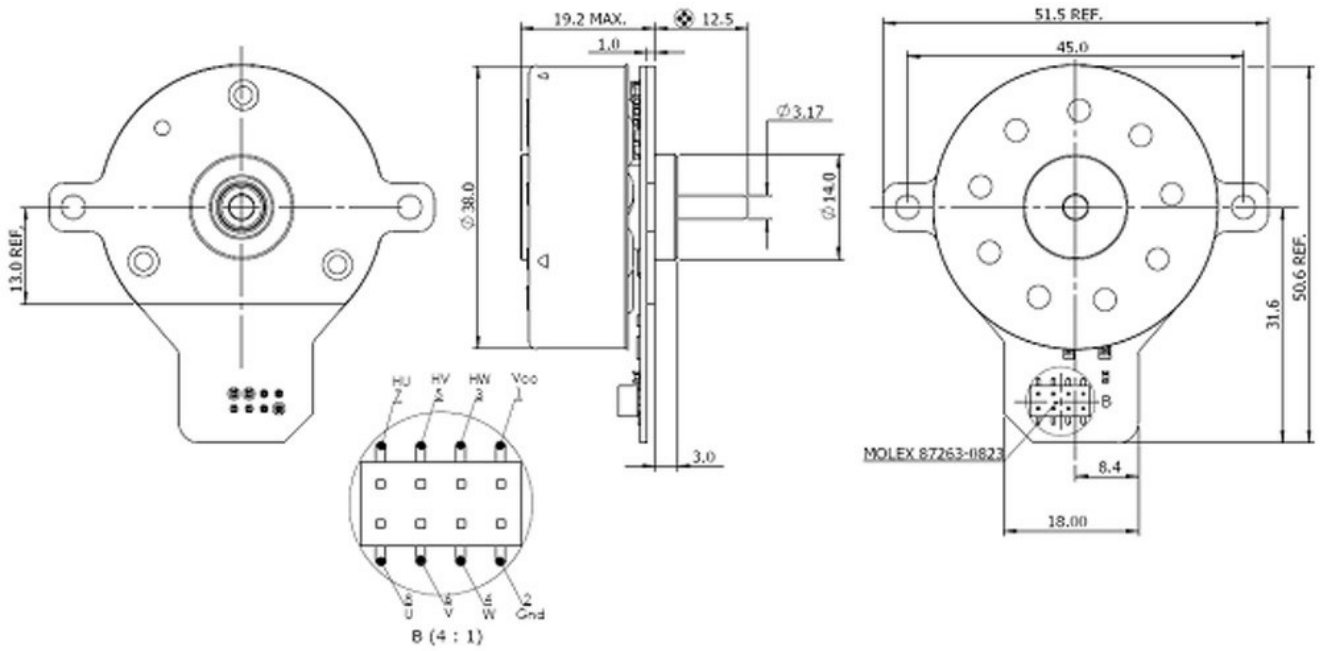
**Performance Data:**

	No Load	Stall	Maximum Efficiency	Maximum Power
Current (A)	0.10	1.50	0.37	0.80
Efficiency (%)	-	-	56	42
Output Power (W)	-	-	2.54	4.00
Speed (rpm)	2300	-	1795	1120
Torque (mNm)	-	68.15	13.49	34.07

Application Examples:

Blowers, Air Flap Actuators, Water Valve Actuators, HVAC, Ventilation, Safety Dampers

Outline Drawing:



Performance Curves:



Units in Metric