

**Characteristics:**

Industry first to address Detent Torque EC Motor

**Specifications:**

Shaft Diameter	: Ø 3.175 mm
Input Voltage	: 12.0 V DC
Detent Torque	: 1.60 mNm
Output Power at Maximum Efficiency	: 2.80 W
Maximum Efficiency	: 64%
Torque at Maximum Efficiency	: 14.60 mNm
Speed at Maximum Efficiency	: 1820 rpm
Life (Typical)	: 20000 hr
Weight	: 80 g
Electrcial Connection	: 2.00mm pitch receptacle, 8 Circuits

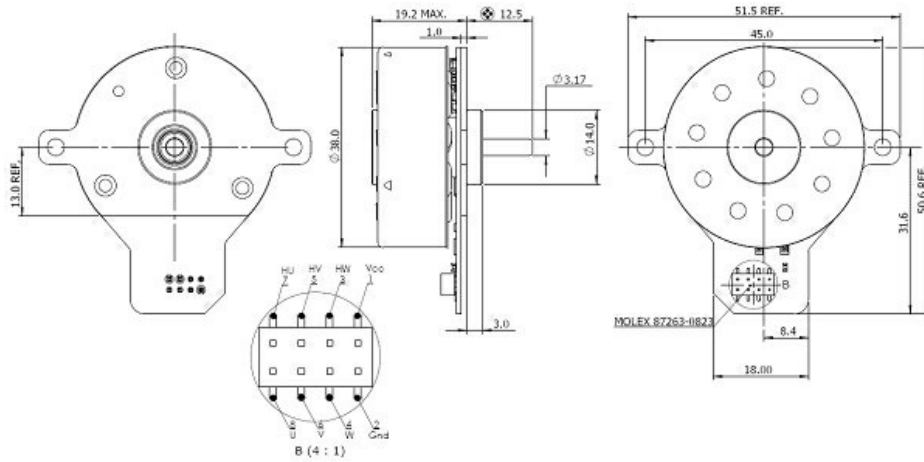
**Performance Data:**

	No Load	Stall	Maximum Efficiency	Maximum Power
Current (A)	0.10	1.70	0.36	0.90
Efficiency (%)	-	-	64	47
Output Power (W)	-	-	2.80	5.00
Speed (rpm)	2180	-	1820	1090
Torque (mNm)	-	87.90	14.60	43.90

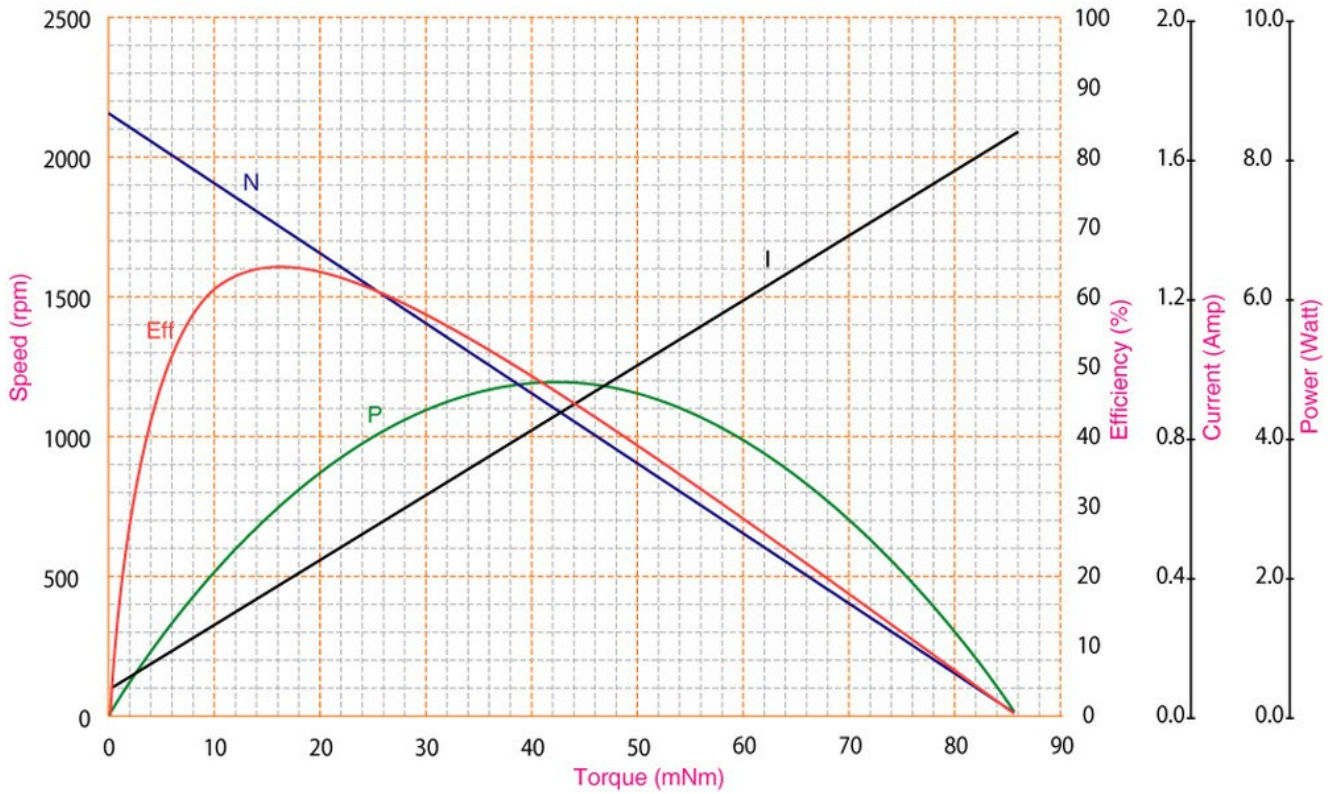
**Application Examples:**

Blowers, Air Flap Actuators, Water Valve Actuators, HVAC, Ventilation, Safety Dampers

Outline Drawing:



Performance Curves:



Units in Metric