

Characteristics:

Low power EC motor

**Specifications:**

Dimensions (in)	: Ø 1.4 X 1.8 in
Shaft Diameter (in)	: Ø 0.157 in
Input Voltage (V)	: 18.0 V DC
No Load Speed (rpm)	: 4800 rpm
No Load Current (A)	: 0.18 A
Nominal Speed (rpm)	: 3800 rpm
Nominal Torque (lb.in)	: 0.27 lb.in
Nominal Current (A)	: 0.98 A
Stall Torque (lb.in)	: 1.24 lb.in
Stall Current (A)	: 4.00 A
Maximum Output Power (hp)	: 0.02 hp
Maximum Efficiency (%)	: 67%
Torque (lb.in) - Max Eff	: 0.22 lb.in
Speed (rpm) - Max Eff	: 4000 rpm
Life (Typical)	: 10000 hr
Weight (oz)	: 7 oz
Operating Temperature Range (°F)	: 14 to 149 °F
Storage Temperature Range (°F)	: -40 to 158 °F
Electrical Connection	: Leadwire and connector

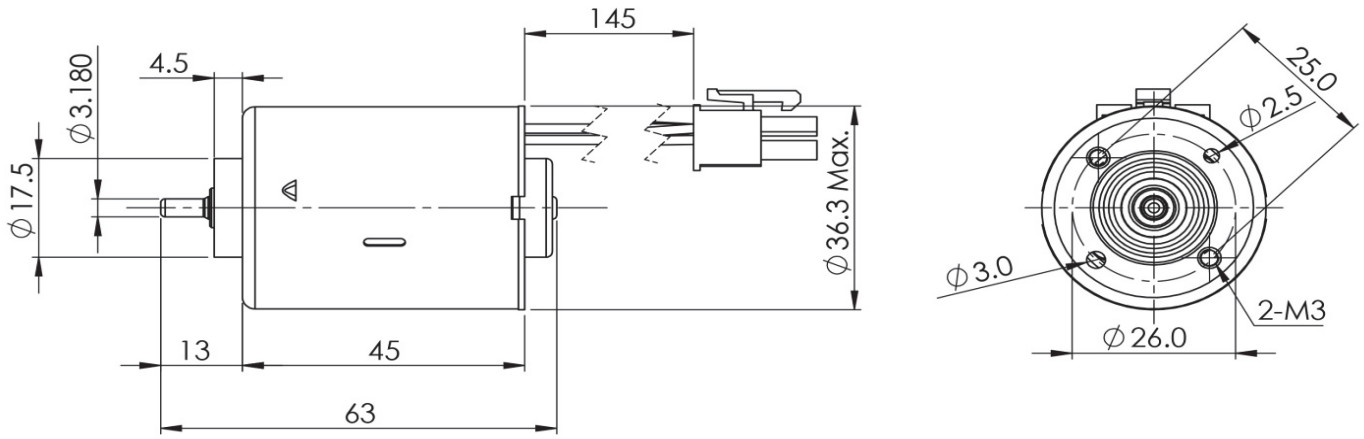
Performance Data:

	No Load	Stall	Max Efficiency	Max Power
Current (A)	0.18	4.00	0.82	2.00
Efficiency (%)	-	-	67.00	46.00
Output Power (hp)	-	-	0.01	0.02
Speed (rpm)	4800.00	-	4000.00	2400.00
Torque (lb.in)	-	1.24	0.22	0.62

Application Examples:

Robotic Mower Drive

Drawing:



Performance Curves:

