

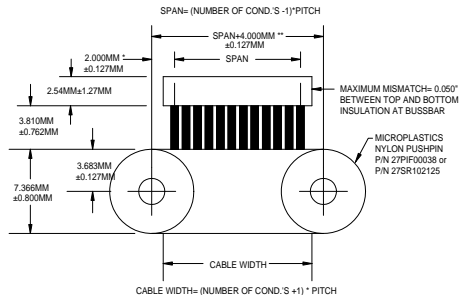
CABLE DETAILS

CONDUCTOR TO CONDUCTOR SPACING:
 0.0394"±0.005" UNLESS SPECIFIED
 INSULATION: 0.002" THICK POLYESTER
 CONDUCTORS: 0.003" X 0.026" FLAT TINNED COPPER
 STRAIN RELIEF: 0.003" THICK POLYESTER
 RATING: AWM STYLE 20566, 105°C, VW-1

PROPRIETARY INFORMATION NOTICE

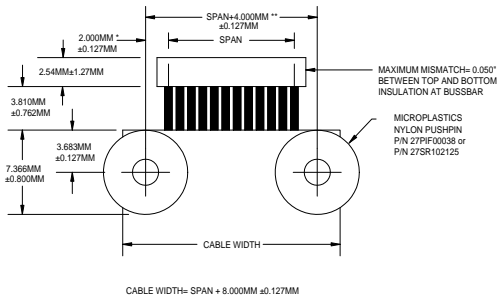
This document and the designs, specifications, and engineering information disclosed herein are the property of Parlex USA LLC, and are not to be disseminated or reproduced without expressed written consent. This document is loaned in confidence and then only for consideration of the matter disclosed herein. In accepting loan of this document, the recipient agrees to keep it and the matter disclosed herein in confidence and not to use or permit their use in any way detrimental to Parlex USA LLC.

LAMINATED STRIP STRAIN RELIEF



DIMENSIONS WITH SPECIAL DENOTATION:
 FOR 2.54MM & 1.27MM PITCH CABLES ONLY;
 DIMENSION WITH * TO BE 4.000MM±1.27MM
 DIMENSION WITH ** TO BE SPAN+8.00MM±1.27MM

WIDE MARGIN STRAIN RELIEF



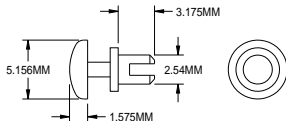
A Johnson Electric Company

DESCRIPTION OF TERMINATION OF STANDARD
 ALS CABLE ON 1.00MM PITCH

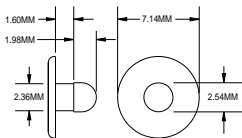
| SIZE | FSCM | PS-592 | Rev. |
|-------|-------|--------|--------------|
| B | 18377 | | F |
| SCALE | 4:1 | | SHEET 1 OF 2 |

RECOMMENDED PUSHPINS

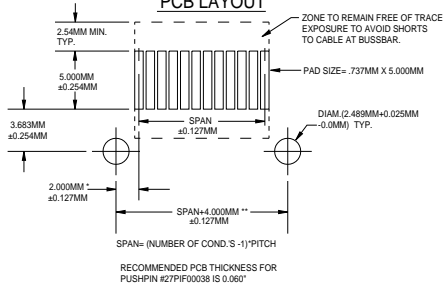
NYLON PUSHPIN DETAILS MICROPLASTICS P/N 27SR102125



NYLON PUSHPIN DETAILS MICROPLASTICS P/N 27PIF00038



RECOMMENDED PCB LAYOUT



DESCRIPTION OF TERMINATION OF STANDARD ALS CABLE ON 1.00MM PITCH

| | | | |
|------------------|----------------------|---------------|------------------|
| SIZE B | FSCM 18377 | PS-592 | Rev. F |
| SCALE | 4:1 | | SHEET 2 OF 2 |