

MP 4525

The MP 4525 motor platform is designed for a small engine cooling fan.

The motor is optimized for weight, based on 2 poles brushed technology.

It is extensively tested for the severe engine bay working condition and its reliability is proven by millions of applications world-wide.



Technology Leadership

- Low weight
- High power density
- Low noise and vibration

Specification

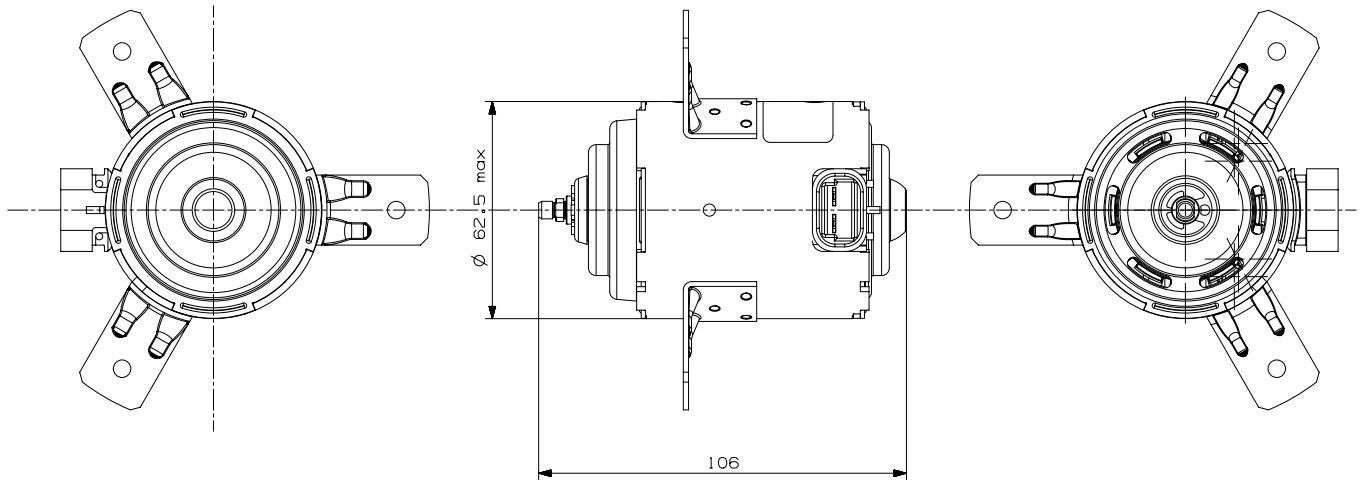
- Design input power : 90 W
- Motor length : 106 mm
- Motor weight : 0.69 kg
- Efficiency : 58 %
- Input voltage : 13 V
- Operating temp. : - 40°C to + 110°C (peak 125°C)
- EMC : according to CISPR 25
- Compliance : ELV 2000/53/CE

Performance Data:

| | No load | Max eff. | Design | Stall |
|----------------|---------|----------|--------|-------|
| Speed [rpm] | 2,663 | 2,147 | 1,975 | |
| Current [A] | 1.1 | 4.4 | 5.5 | 18 |
| Torque [Nm] | | 0.15 | 0.20 | 0.8 |
| Efficiency [%] | | 59 | 58 | |

MP 4525

Drawing



Performance Curve

