

Characteristics:

High Power, High Torque, High Efficiency

Specifications:

| | |
|-----------------------------|--------------------|
| Dimensions | : Ø 1.7 X 2.7 in |
| Shaft Diameter | : Ø 0.197 in |
| Input Voltage | : 230.0 V DC |
| Rectified | : Rectified |
| No Load Speed | : 18327 rpm |
| Maximum Efficiency | : 62% |
| Speed at Maximum Efficiency | : 13652 rpm |
| Life (Typical) | : 67 hr |
| Life Test Condition | : 12s ON / 48s OFF |
| Weight | : 10 oz |
| Operating Temperature Range | : 14 to 122 °F |
| Storage Temperature Range | : -4 to 185 °F |
| Electrical Connection | : Terminal |



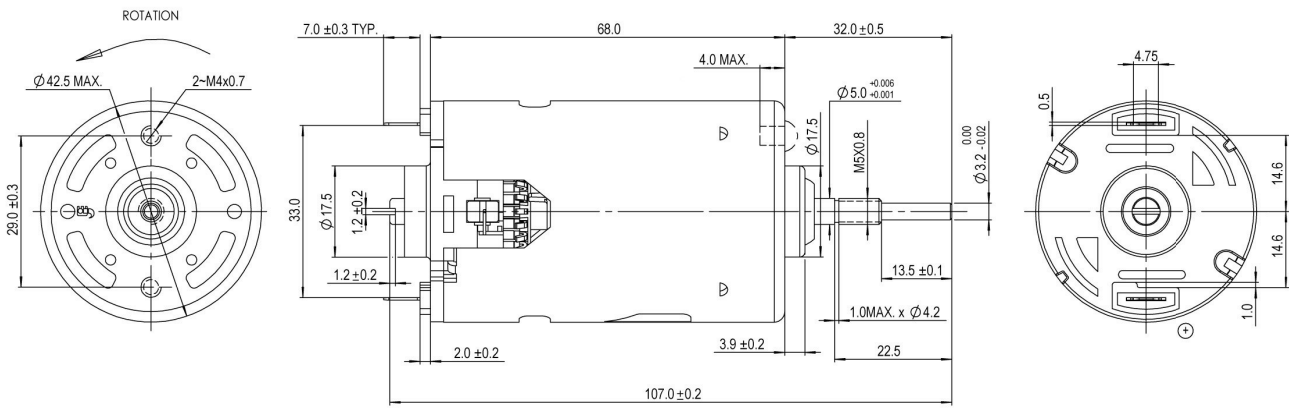
Performance Data:

| | No Load | Stall | Maximum Efficiency | Maximum Power |
|-------------------|---------|-------|--------------------|---------------|
| Current (A) | 0.16 | - | 0.67 | - |
| Efficiency (%) | - | - | 62 | - |
| Output Power (hp) | - | - | 0.11 | - |
| Speed (rpm) | 18327 | - | 13652 | - |
| Torque (Lb.in) | - | - | 0.52 | - |

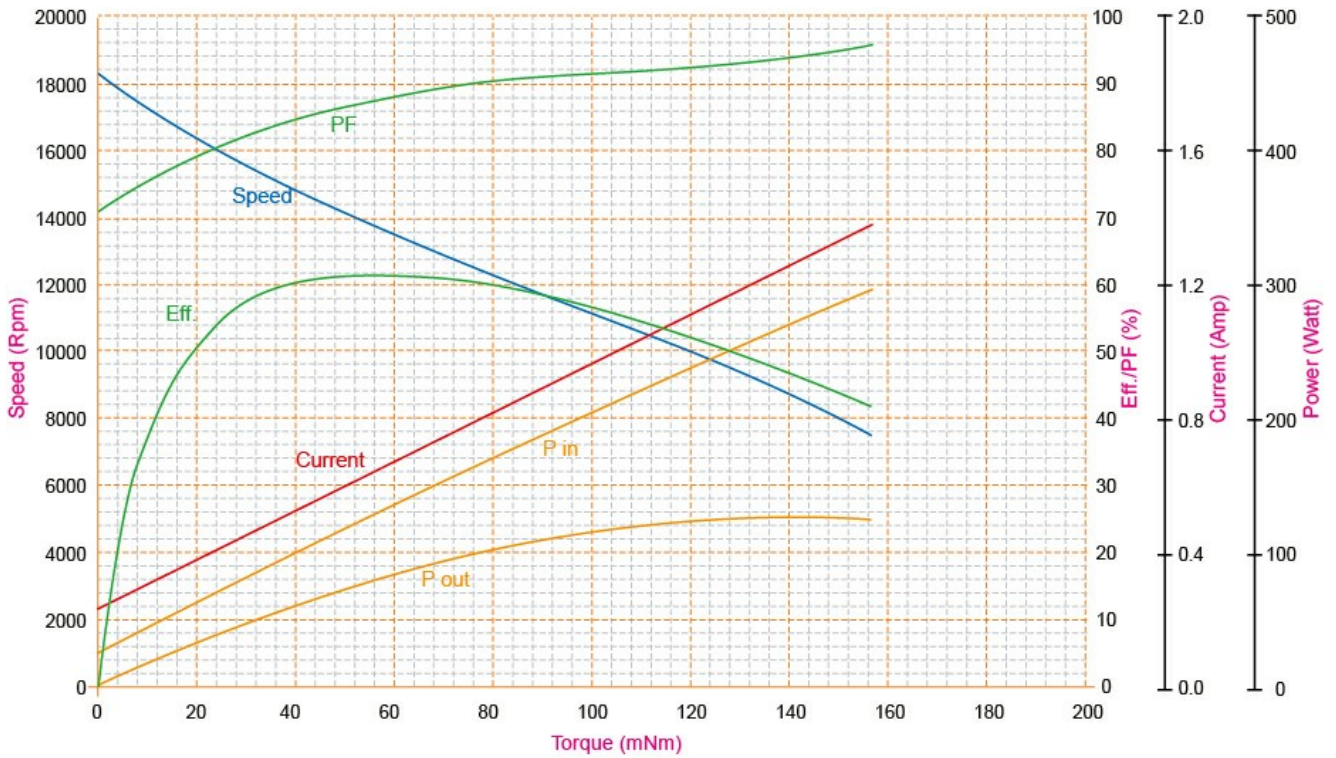
Application Examples:

Grinders

Outline Drawing:



Performance Curves:



Units in Metric