

Characteristics:

 High Power, High Torque, High Efficiency
Specifications:

Dimensions	: Ø 42.5 X 68.0 mm
Shaft Diameter	: Ø 5.000 mm
Input Voltage	: 230.0 V DC
Rectified	: Rectified
No Load Speed	: 18327 rpm
Maximum Efficiency	: 62%
Torque at Maximum Efficiency	: 58.52 mNm
Speed at Maximum Efficiency	: 13652 rpm
Life (Typical)	: 67 hr
Life Test Condition	: 12s ON / 48s OFF
Weight	: 283 g
Operating Temperature Range	: -10 to 50 °C
Storage Temperature Range	: -20 to 85 °C
Electrical Connection	: Terminal

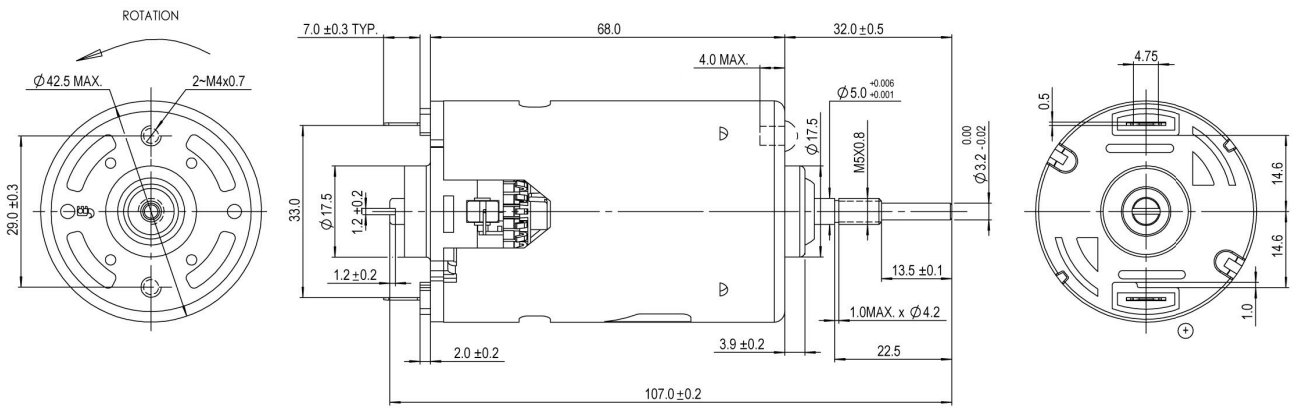
**Performance Data:**

	No Load	Stall	Maximum Efficiency	Maximum Power
Current (A)	0.16	-	0.67	-
Efficiency (%)	-	-	62	-
Output Power (W)	-	-	84.50	-
Speed (rpm)	18327	-	13652	-
Torque (mNm)	-	-	58.52	-

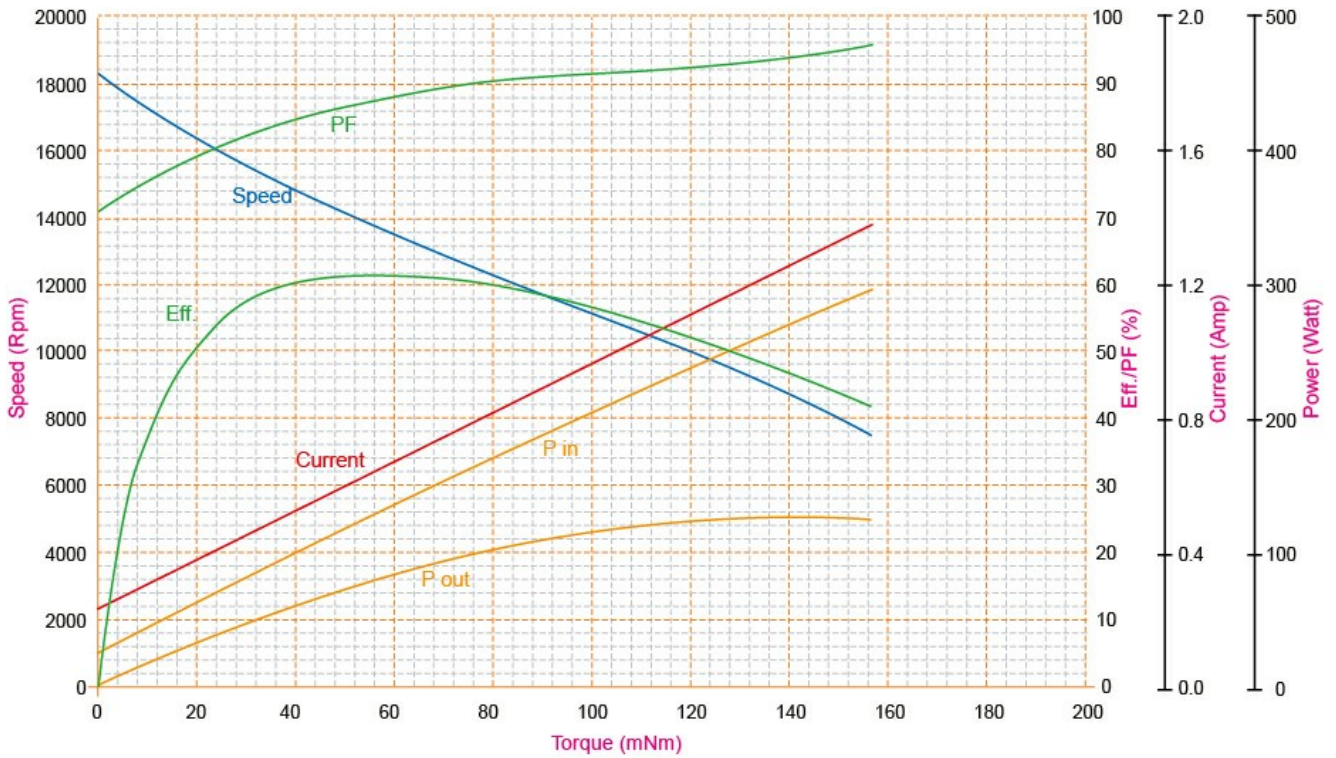
Application Examples:

 Grinders

Outline Drawing:



Performance Curves:



Units in Metric