

Characteristics:

High Power, High Efficiency

Specifications:

Dimensions	: Ø 45.3 X 75.3 mm
Shaft Diameter	: Ø 5.000 mm
Input Voltage	: 230.0 V DC
Rectified	: Rectified
No Load Speed	: 14751 rpm
Maximum Efficiency	: 70%
Torque at Maximum Efficiency	: 98.00 mNm
Speed at Maximum Efficiency	: 11558 rpm
Other Features	: Plate rating power 850Wi for 5-10 seconds
Life Test Condition	: 55
Weight	: 435 g
Operating Temperature Range	: -10 to 55 °C
Storage Temperature Range	: -20 to 80 °C
Electrical Connection	: Terminal



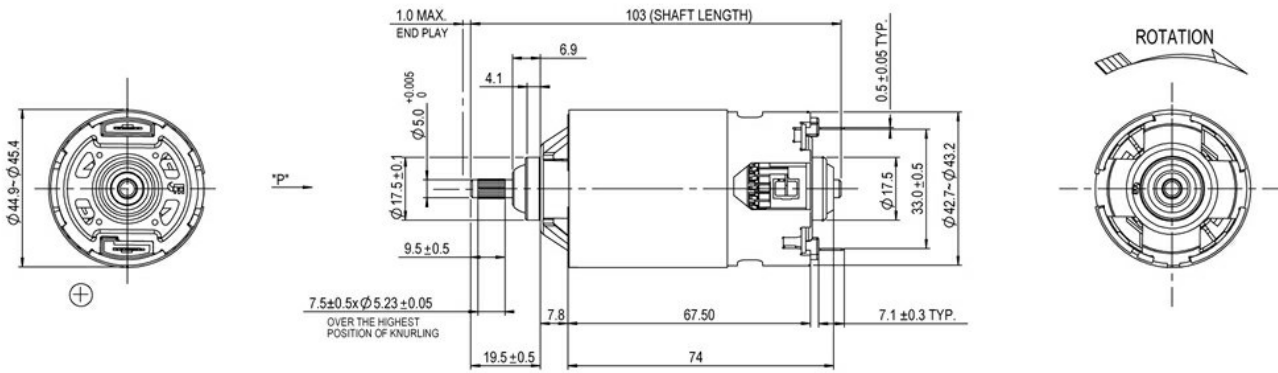
Performance Data:

	No Load	Stall	Maximum Efficiency	Maximum Power
Current (A)	0.13	-	0.89	-
Efficiency (%)	-	-	70	-
Output Power (W)	-	-	121.44	-
Speed (rpm)	14751	-	11558	-
Torque (mNm)	-	-	98.00	-

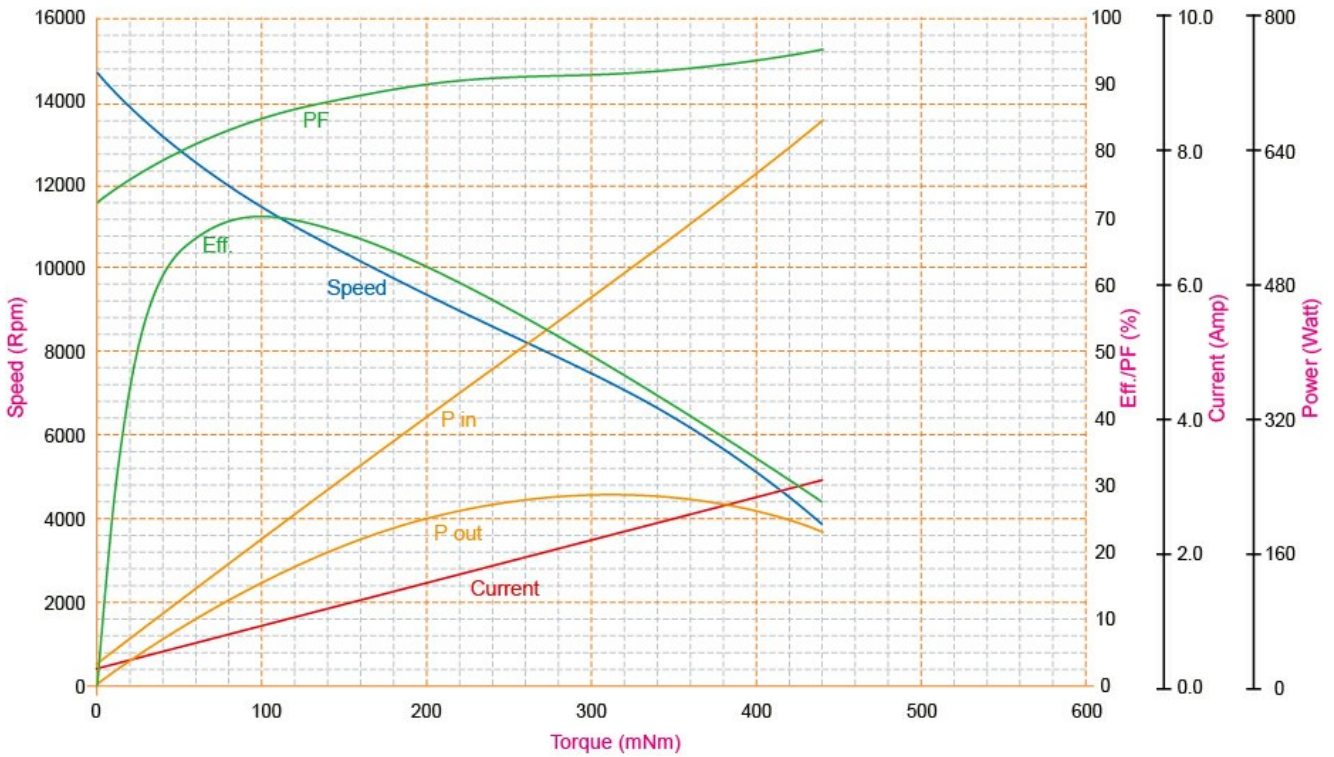
Application Examples:

Hand Blenders

Outline Drawing:



Performance Curves:



Units in Metric