

# 150 mm Metal Forward Centrifugal Fan

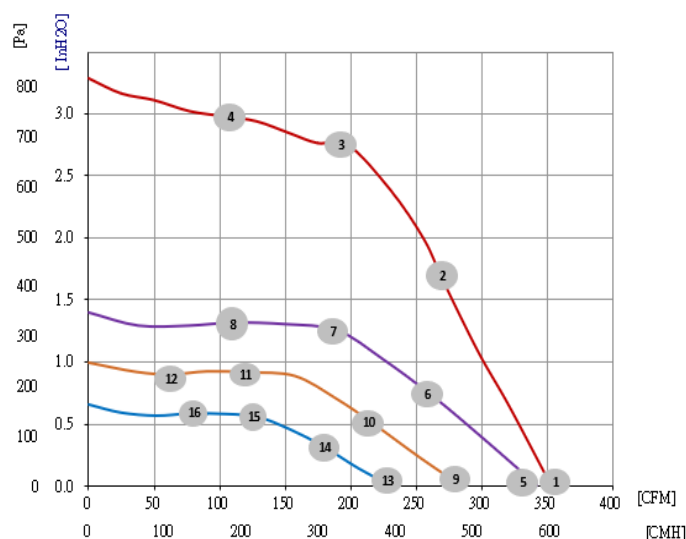
## SPECIFICATIONS

Material:	Impeller: Metal Rotor: Zinc Plating Steel Electronics housing: Die-cast aluminium
Number of blades:	38
Direction of rotation:	Counter Clockwise viewed toward rotor
Insulation class:	"B"
Installation position:	Any
Degree of protection:	IP54
Condensation drainage holes:	None
Mode:	Continuous operation (S1)
Mounting:	Maintenance-free ball bearings
Technical features:	Controller input PWM/0-10V
Cable exit:	Variable
Protection class:	I (with customer connection of protective earth)
Conformity with standards:	EN 60335-1
Weight:	1.34KG



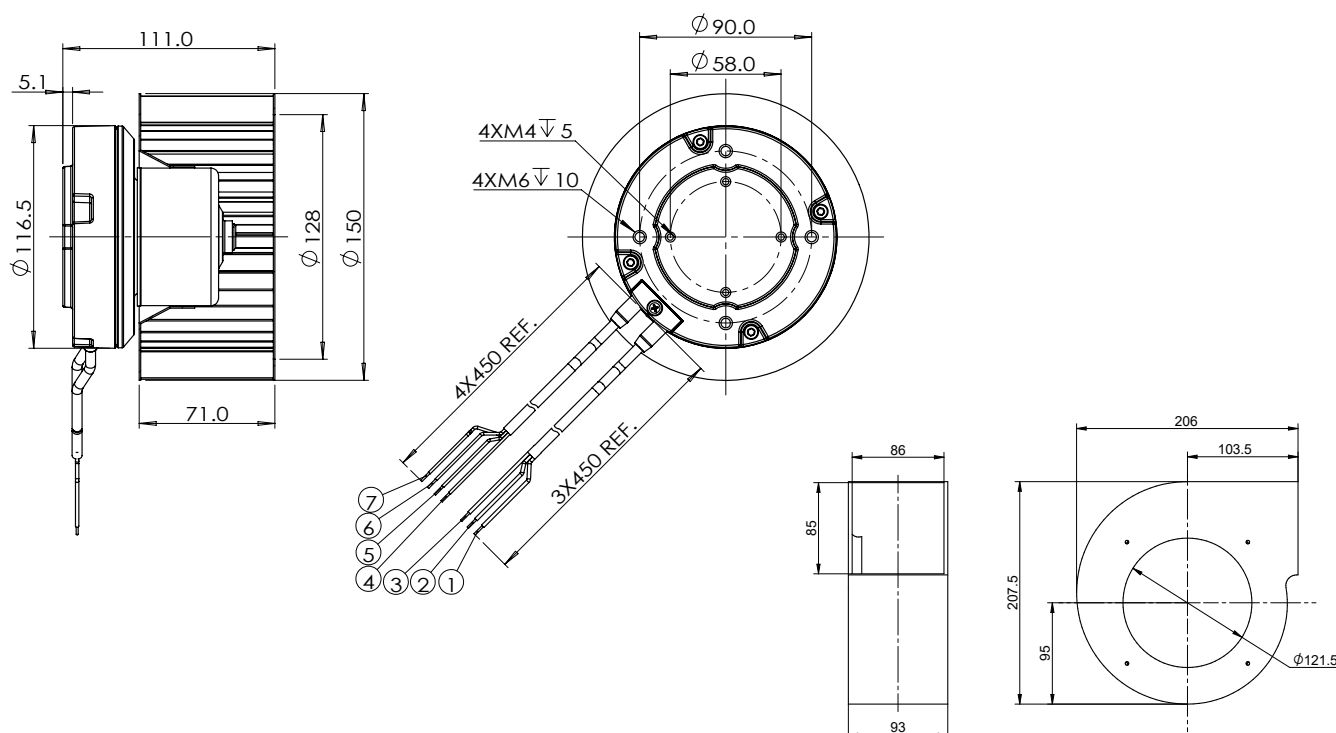
## PERFORMANCE

Nominal data	Platform	Curve	Nominal voltage range	Frequency	Speed*	Max input power*	Max input current*	Operating ambient temp	Life time	PWM/ 0-10V
Type	Motor		VAC	Hz	rpm	W	A	°C	Hr	
ECO150DF235072220	OD72	A	230	50 / 60	2530	170	1.32	-20 to +60	40,000	●



	n (rpm)	P1 (W)	I (A)	$\eta$ (%)	P (Pa)	P ( $\text{inH}_2\text{O}$ )	Q (CMH)	Q (CFM)
①	2530	168	1.32	0	0	0	602	354
②	3000	172	1.34	30.6	411	1.65	461	271
③	3470	163	1.30	39.0	683	2.74	337	198
④	3640	110	0.91	32.6	740	2.97	176	104
⑤	2450	154	1.22	—	0	0	581	342
⑥	2450	115	0.93	19.3	179	0.72	447	263
⑦	2450	80	0.69	35.1	313	1.26	322	190
⑧	2450	51	0.47	33.5	328	1.32	187	110
⑨	2050	91	0.76	—	0	0	486	286
⑩	2050	68	0.59	19.0	127	0.51	368	217
⑪	2050	40	0.37	32.5	228	0.91	207	122
⑫	2050	27	0.26	24.7	224	0.90	107	63
⑬	1660	51	0.45	—	0	0	394	232
⑭	1660	40	0.37	17.0	80	0.32	304	179
⑮	1660	31	0.29	27.6	140	0.56	217	128
⑯	1660	22	0.22	24.1	146	0.59	128	76

## DRAWING:



## DIAGRAM:

