

EV LOCKING ACTUATOR FOR SAFE CHARGING



Experience Johnson Electric's EV Locking Actuator
Solutions That Introduce a New Performance Class

DATASHEET

CHARACTERISTICS

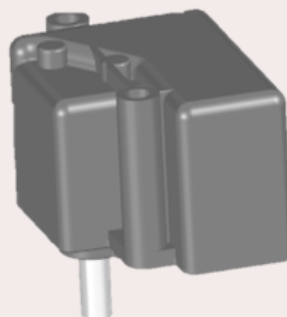
The EV locking actuator is designed to provide outstanding performance and reliability for electric vehicle and wallbox applications. With the capability to generate a force exceeding 70 N, this actuator features a three-position detection that enhances precise positioning. Its high-efficiency gearbox, equipped with a self-locking mechanism, ensures security by preventing unauthorized access. Designed to withstand extreme temperatures, the actuator operates seamlessly within a range of -40°C to $+85^{\circ}\text{C}$, making it an ideal choice for various automotive environments. With these innovative features, Johnson Electric's EV locking actuator emerges as a strong solution for securing electric vehicles and wallboxes during the charging process.

APPLICATION

Industry &
Home Application



CPL Wall Box



STANDARD DATA

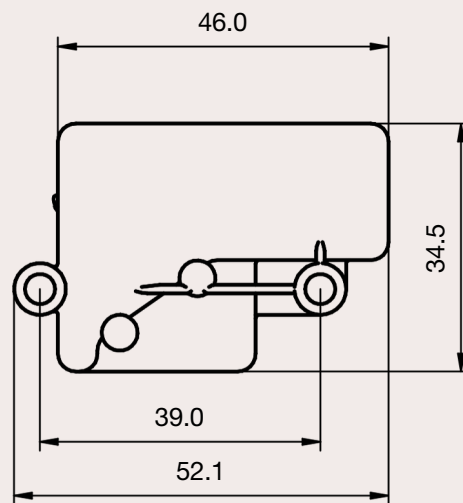
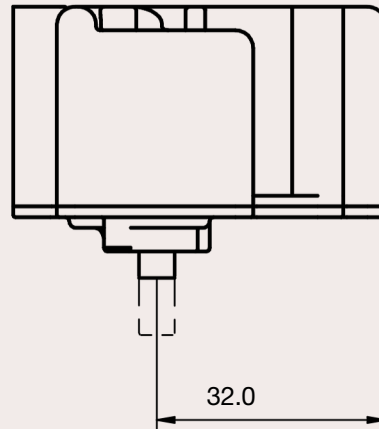
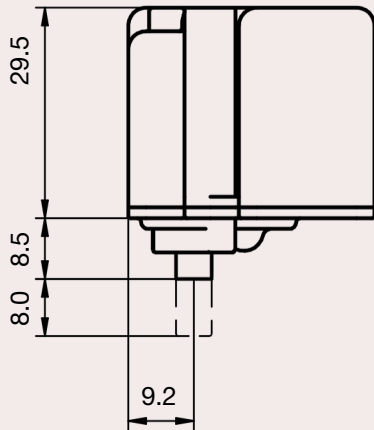
| | |
|----------------------------------|--|
| ■ Nominal voltage | 12 V |
| ■ Operating voltage range | 9 V to 16 V |
| ■ Nominal power | < 6 W |
| ■ Actuating time at no load (9V) | 300 ms |
| ■ Operate pulse | 1 s |
| ■ Electrical connection | customisation on request |
| ■ Locking pin position detection | 3 positions (locked / undetermined / unlocked) |
| ■ Temperature range | from -40°C to 85°C |
| ■ IP classification | IP6K9K (inlet) |
| ■ Noise level | < 55 dB |

MECHANICAL DATA

| | |
|-------------------------------------|-------------------------|
| ■ Endurance, no load | 100,000 cycles |
| ■ Traveling force | > 30 N |
| ■ Blocking force at locked position | > 200 N (not energized) |
| ■ Locking stroke | up to 8 mm |

DRAWING

OUTER DIMENSION



DISCLAIMER

This data sheet is for reference purposes only. Technical details and specifications are subject to change at any time due to enhancements and other factors. For comprehensive specifications and application assistance, please reach out to your local Johnson Electric sales office.

A PROVEN INDUSTRY STANDARD

Johnson Electric is one of the world's largest providers of motors, solenoids, micro-switches, flexible printed circuits and micro-electronics. With an annual production capacity of over one billion units, we deliver products and services to the most exacting standards of performance, quality and reliability. Our innovative technologies enable our customers to succeed in their markets through delivering more comfortable, safer and healthier products for end users.

WE HAVE MORE IN OUR PORTFOLIO!



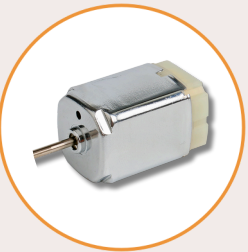
Water &
Oil Pumps



Blowers &
Cooling Fans



Human Machine
Interface (HMI)



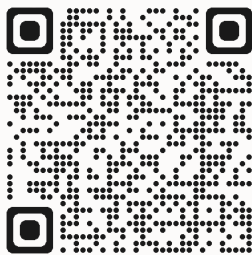
AC & DC
Motors



Display Solutions,
Antenna & Lighting



Switches &
Switch Assemblies



Talk to our **Engineer**

Our global sales team is at your disposal to guide you toward the best fitting solution!

✉ sales@johnsonelectric.com

🌐 johnsonelectric.com

🌐 [johnsonelectricgroup](http://johnsonelectricgroup.com)

