

**Characteristics:**

High and Controllable Flow Rate

**Specifications:**

Dimensions	: 56.0 X 94.3 X 76.6 mm
Input Voltage	: 24.0 V DC
Rated Flow Rate 1	: 2300 ml/min @ 2.00 bar
Max Flow Rate	: 3000.00 ml/min @ 0.25 bar
Max Pressure	: 7.00 bar
Fluid Temperature Range	: 5 to 55 °C
Fluid Type	: water, detergent, high viscosity fluids
Maximum Efficiency	: 28 %
Maximum Efficiency of Motor	: 62 %
Flow Rate at Maximum Efficiency	: 2100 ml/min
Noise Level	: 78 dBA
Noise Level Condition	: Noise probe located at 0.1m from pump body
Other Feature	: Self Prime Height: 80cm under flow rate of 3000ml/min ; Inlet & Outlet OD: 7.0mm ; Speed adjustable ; Reversible flow
Life (typical)	: 200 hr
Life Test Condition	: 15s ON / 15s OFF, cold water at 20°C @ 2.0bar
Weight	: 460 g
Operation Temperature	: 2 to 50 °C
Storage Temperature	: -20 to 85 °C
Electrical Connection	: Connector Housing Terminal
Certification	: Option for FDA certification

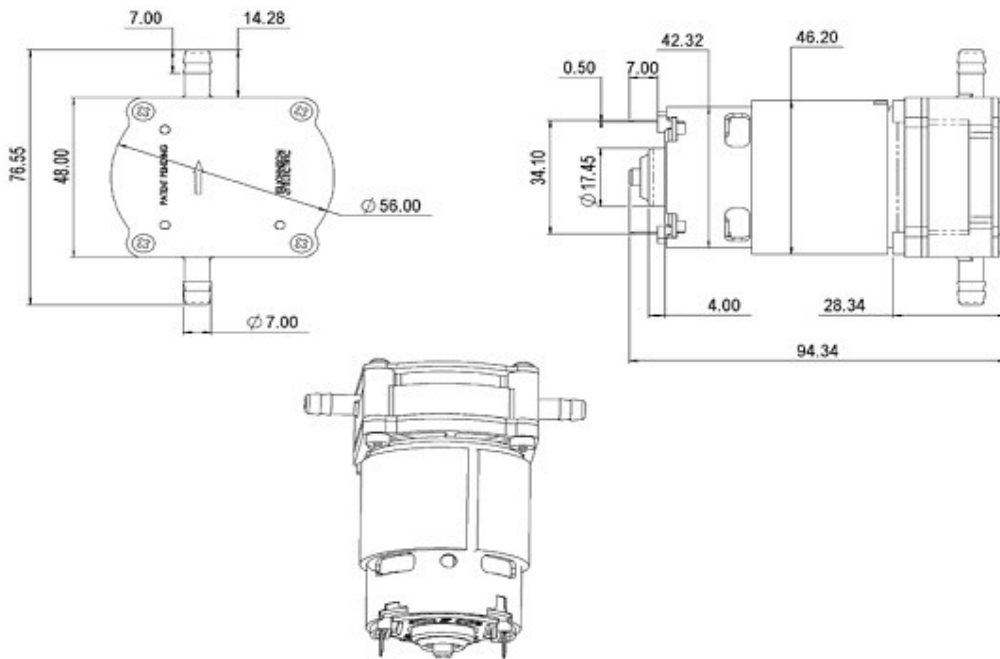
**Performance Data:**

	Valve Fully Open	Typical Working Point	Max Efficiency	Valve Closed
Water Flow Rate (ml/min)	3000	2300	2100	-
Input Power to Motor (W)	35.00	47.00	60.00	-
Efficiency (% , Pump)	-	-	28	-
Efficiency (% , Motor)	-	-	62	-
Water Pressure (bar)	0.25	2.00	3.00	7.00

**Application Examples:**

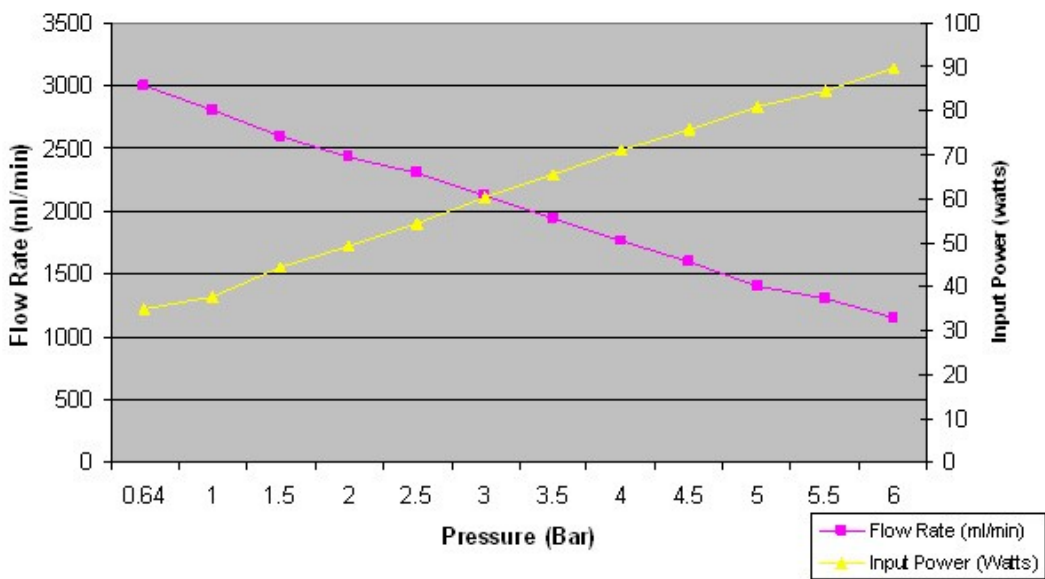
Beverage Machines, Beverage Dispensing, Coffee Machines, Pumps, Detergent Dosing

Drawing:



Performance Curves:

Performance Curve of JE GP700 Gear Pump



Units in Metric