

HA-S3011 Specifications

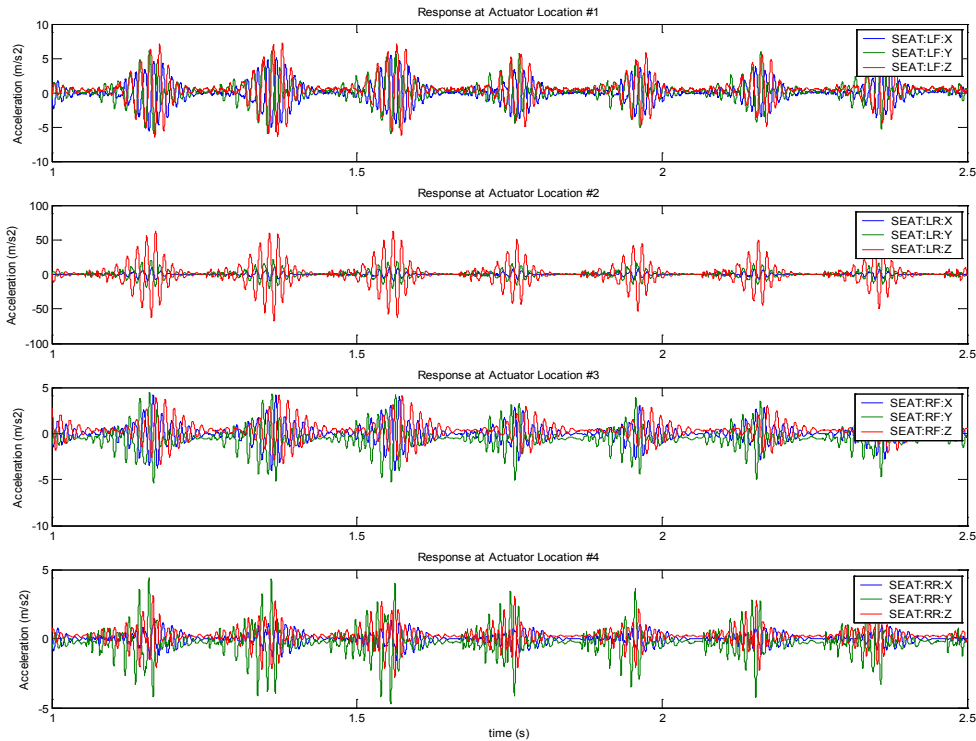
Part Number	1999-3010001	
	Driven by the Memory Seat Module (MSM) packaged within or near the seat, seat HAPTICS unit provide warning sign to the driver in terms of mild vibration shock. This vibration signal is generated by a non-concentric mass mounted on the motor shaft. There are two “target” regions of the haptics signal sources and both are located inside the seat at the left & right-hand side near driver’s thighs.	
Performance data	Intermittent Duty Cycle	100 ms On;->100 ms Off for 1 seconds -> 5 seconds off
	Life Cycles	Total 100,000 cycles.
	Response time	5ms
	Dynamic acceleration	40-60 m/s2 (under 12.0 VDC voltage & Seat foam)
	Noise	65dBA Max. @ 70cm vertically
Electrical data	Coil resistance @ 25°C	33±10%ohm;
	Operating voltage Range	9-16VDC
Mechanical data	Dimension (except the harness)	25.4mm(Width) x 19.2mm(Height)x81.0mm(length)
	Eccentric weight	7 gram about
	Total weight	50gram
	Operating temperature	-40 to 85°C
	Connector	Optional (customer mating connector requirement)



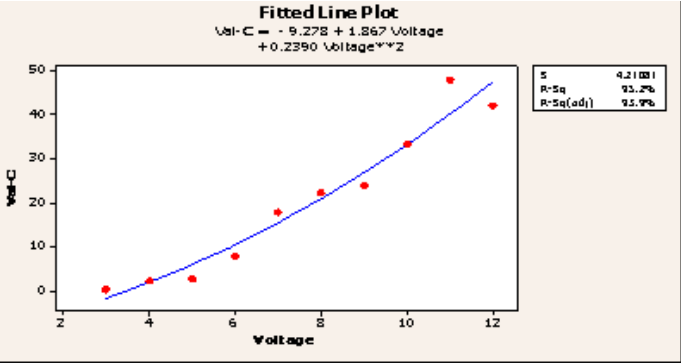
Notes:

All data is typical
All specifications subject to change without notice;
Other voltages available on request
This is a no load supporting device
Units can be combined together for higher loads

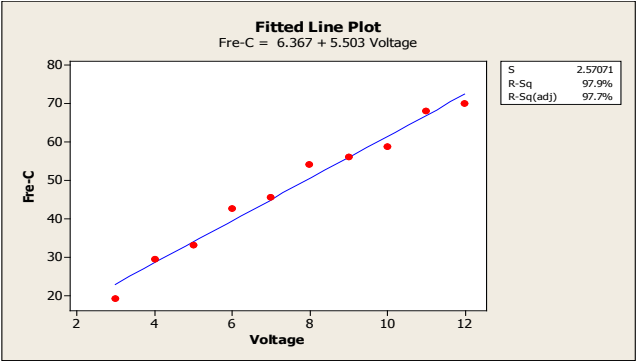
Performance



Typical vibration at 25°C (different Voltage)



Typical Frequency at 25°C (different Voltage)



Dimension ((mm))

