

# TIPPMATIC® Auto Power-Off Series

## TIPPMATIC®

### Exceeds the requirements of European Ecodesign Directive

Main applications	Appliances & coffee machines Washer, dryer, dishwasher
Characteristics	<ul style="list-style-type: none"><li>■ single pole on/off power switch</li><li>■ double pole on/off switch (TIPPMATIC iFD Double Disconnect)</li><li>■ auto power-off function embedded</li><li>■ zero stand-by power consumption</li><li>■ manual shut-off at any time</li><li>■ illuminated as on option</li><li>■ contact gap 3 mm</li><li>■ tracking resistance PTI 250</li><li>■ glow wire test 850 °C &amp; compliant to IEC 60335-1, 4 ed.</li><li>■ PCB terminals</li></ul>
Rating	250 VAC, 12(4) A T100 125 VAC, 12 A T100 250 VAC, 13 A T85 100 VAC, 13 A T85
Dimensions (mm)	TIPPMATIC iF 25 x 40 x 13
Actuator	<ul style="list-style-type: none"><li>■ plunger</li><li>■ customized actuators on request</li></ul>
Approvals	ENEC, cULus



## Product line

### TIPPMATIC® Timer

#### Ideal for small appliances & filter coffee machines

- auto power-off switch with integrated timer electronics
- complete range of shut-off times to meet any requirements



### TIPPMATIC® iF

#### Ideal for appliances, automatic coffee machines, washer, dryer, dishwasher

- auto power-off switch with integrated interface
- shut-off signal to be provided externally from appliance's control unit



### TIPPMATIC® Plus

#### Ideal for appliances, automatic coffee machines, washer, dryer, dishwasher

- auto power-off switch with integrated driver unit & interface
- shut-off signal to be provided externally from appliance's control unit



### TIPPMATIC® iPlus

#### Ideal for appliances, automatic coffee machines, washer, dryer, dishwasher

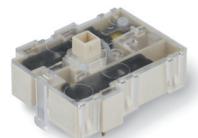
- auto power-off switch with microcontroller, driver unit & interface
- microcontroller supports customized features



### TIPPMATIC® iFD Double Disconnect

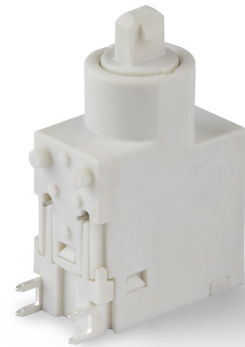
#### Ideal for automatic coffee machines, washer, dryer, dishwasher

- auto power-off switch with integrated interface
- shut-off signal to be provided externally from appliance's control unit
- programmable control option

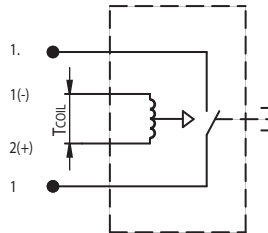


## Specifications

Switch type	Push button switch with auto power-off function
Features	Single pole on/off Power switch with integrated solenoid Interface for connection to appliance's control unit Auto shut-off signal to be provided externally Signal 16-22 VDC, 3 msec. max. pulse time



Circuit diagram



Dimensions

