

TIPPMATIC® Auto Power-Off Series



TIPPMATIC®

Exceeds the requirements of European Ecodesign Directive

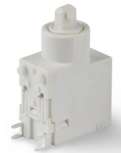
Main applications	Appliances & coffee machines Washer, dryer, dishwasher
Characteristics	<ul style="list-style-type: none"> ■ single pole on/off power switch ■ double pole on/off switch (TIPPMATIC iFD Double Disconnect) ■ auto power-off function embedded ■ zero stand-by power consumption ■ manual shut-off at any time ■ illuminated as on option ■ contact gap 3 mm ■ tracking resistance PTI 250 ■ glow wire test 850 °C & compliant to IEC 60335-1, 4 ed. ■ PCB terminals
Rating	250 VAC, 12(4) A T100 125 VAC, 12 A T100 250 VAC, 13 A T85 100 VAC, 13 A T85
Dimensions (mm)	TIPPMATIC iF 25 x 40 x 13
Actuator	<ul style="list-style-type: none"> ■ plunger ■ customized actuators on request
Approvals	ENEC, cULus

Product line

TIPPMATIC® Timer

Ideal for small appliances & filter coffee machines

- auto power-off switch with integrated timer electronics
- complete range of shut-off times to meet any requirements



TIPPMATIC® iF

Ideal for appliances, automatic coffee machines, washer, dryer, dishwasher

- auto power-off switch with integrated interface
- shut-off signal to be provided externally from appliance's control unit



TIPPMATIC® Plus

Ideal for appliances, automatic coffee machines, washer, dryer, dishwasher

- auto power-off switch with integrated driver unit & interface
- shut-off signal to be provided externally from appliance's control unit



TIPPMATIC® iPlus

Ideal for appliances, automatic coffee machines, washer, dryer, dishwasher

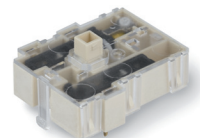
- auto power-off switch with microcontroller, driver unit & interface
- microcontroller supports customized features



TIPPMATIC® iFD Double Disconnect

Ideal for automatic coffee machines, washer, dryer, dishwasher

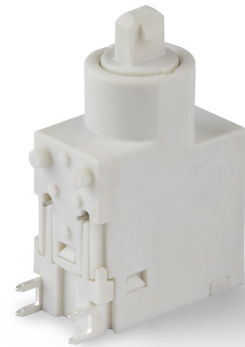
- auto power-off switch with integrated interface
- shut-off signal to be provided externally from appliance's control unit
- programmable control option



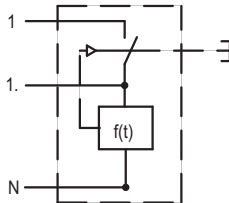
TIPPMATIC® Timer

Specifications

Switch type	Push button switch with auto power-off function
Features	Single pole on/off Power switch with integrated solenoid & timer electronics 27 shut-off times ranging from 30 secs. to 20 h Start-up time of electronics ~5 sec. Shut-off in case of mains power failure (0-voltage function)



Circuit diagram



Dimensions

